

COMMONWEALTH OF PENNSYLVANIA  
DEPARTMENT OF ENVIRONMENTAL PROTECTION

ACID MINE DRAINAGE ABATEMENT PROJECT  
HAMILTON DISCHARGE

FINDLAY TOWNSHIP  
ALLEGHENY COUNTY  
CONTRACT NO. AMD 02(0642)101.1

DRAWING INDEX

TITLE	DWG. NO.
COVER SHEET & TITLE	1 of 3
PLAN & SECTIONS	2 of 3
DETAILS	3 of 3

MARK SCHWEIKER  
GOVERNOR

DAVID E. HESS  
SECRETARY  
DEPARTMENT OF ENVIRONMENTAL PROTECTION

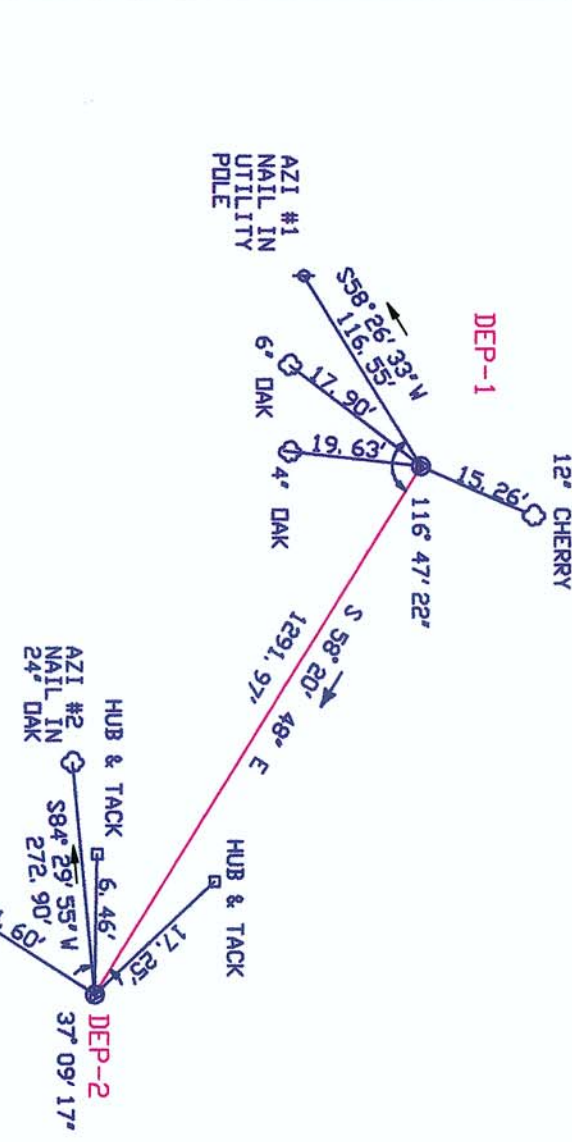
Prepared By  
DEPARTMENT OF ENVIRONMENTAL PROTECTION  
BUREAU OF ABANDONED MINE RECLAMATION  
CAMBRIA OFFICE



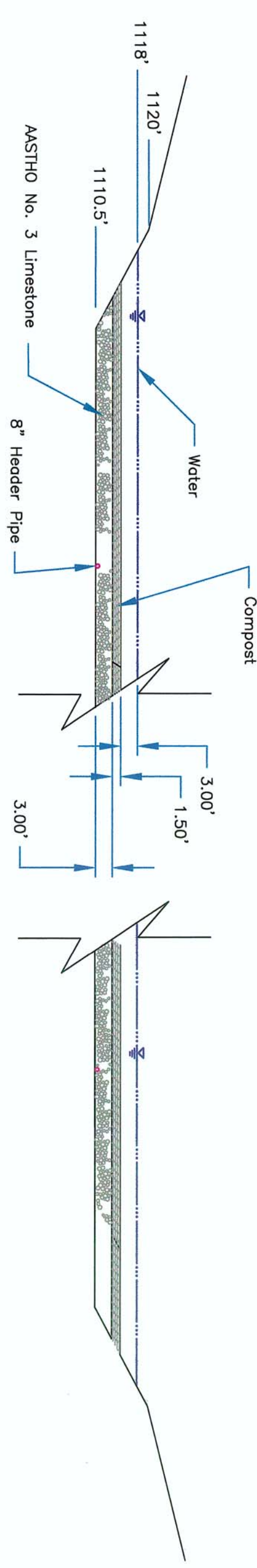
*Eric E. Cavazza*  
ERIC E. CAVAZZA  
DESIGN SECTION CHIEF - CAMBRIA OFFICE  
DEPARTMENT OF ENVIRONMENTAL PROTECTION  
10/3/02  
DATE



BM NO.	BENCHMARK STA.	ELEVATION	DESCRIPTION	N. COORDINATE	E. COORDINATE
DEP-1	0+00.00	1081.14	5/8" REBAR WITH CAP	485119.30	1259714.30
DEP-2	12+91.97	1162.61	5/8" REBAR WITH CAP	485441.30	1260814.08

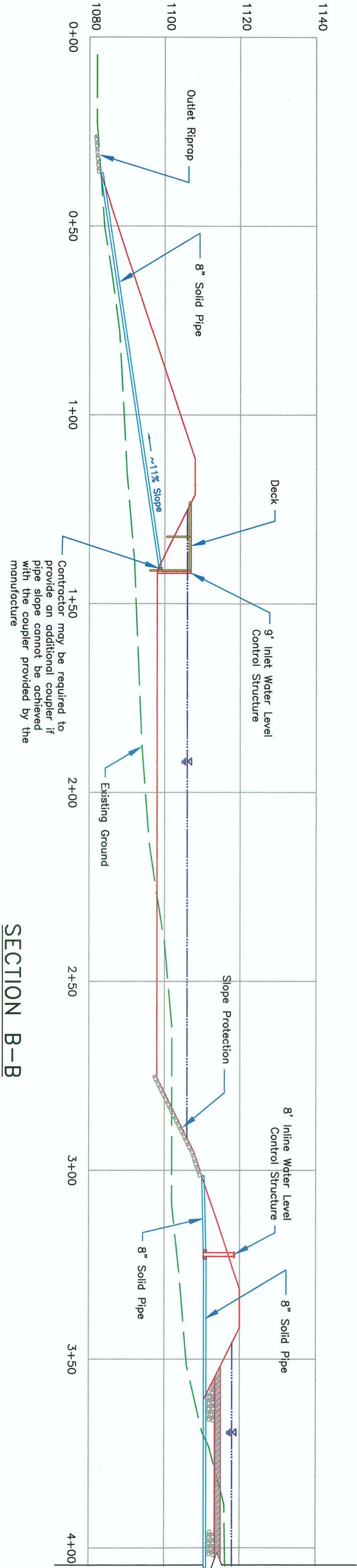


CONSTRUCTION BASELINE DATA



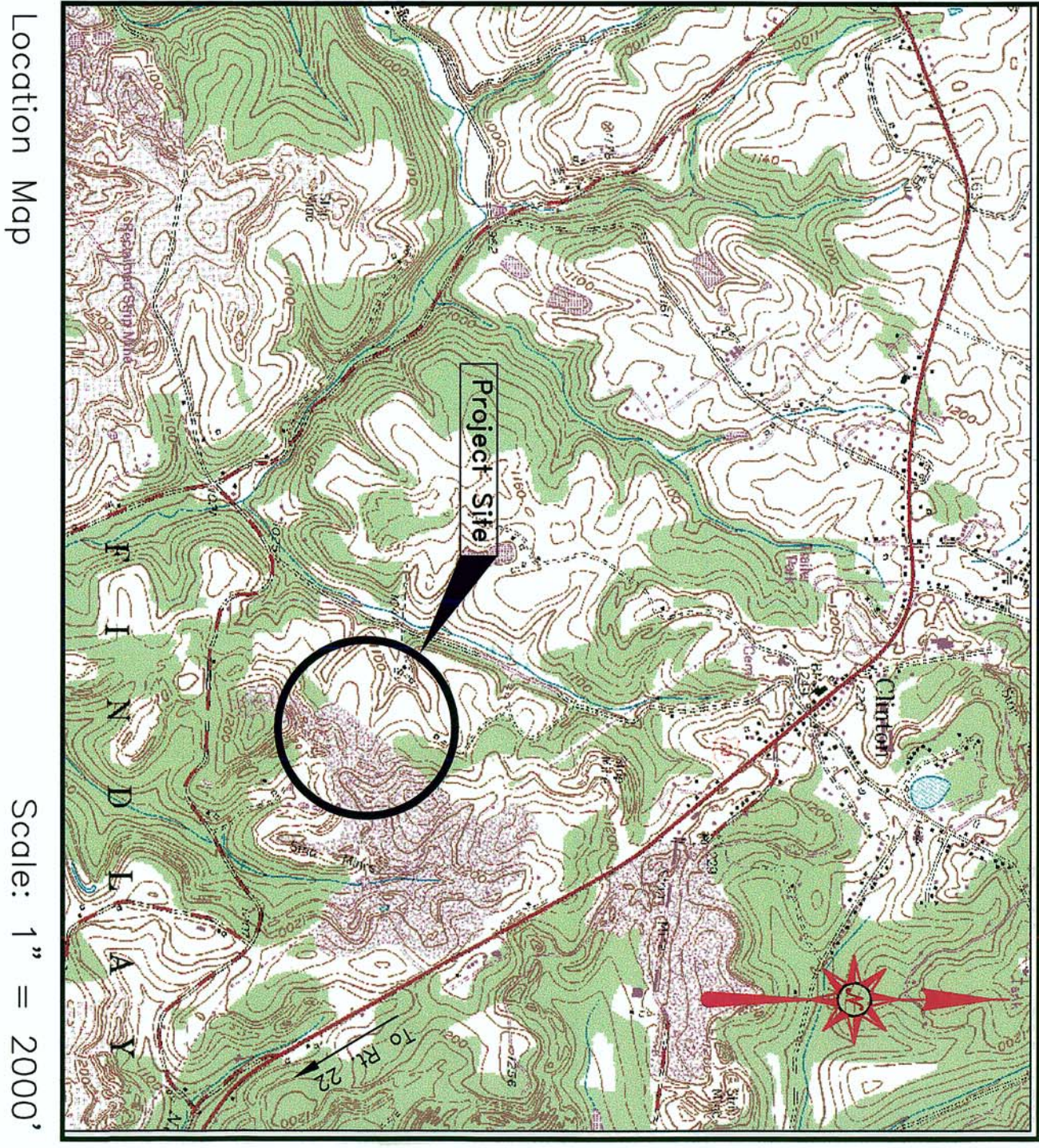
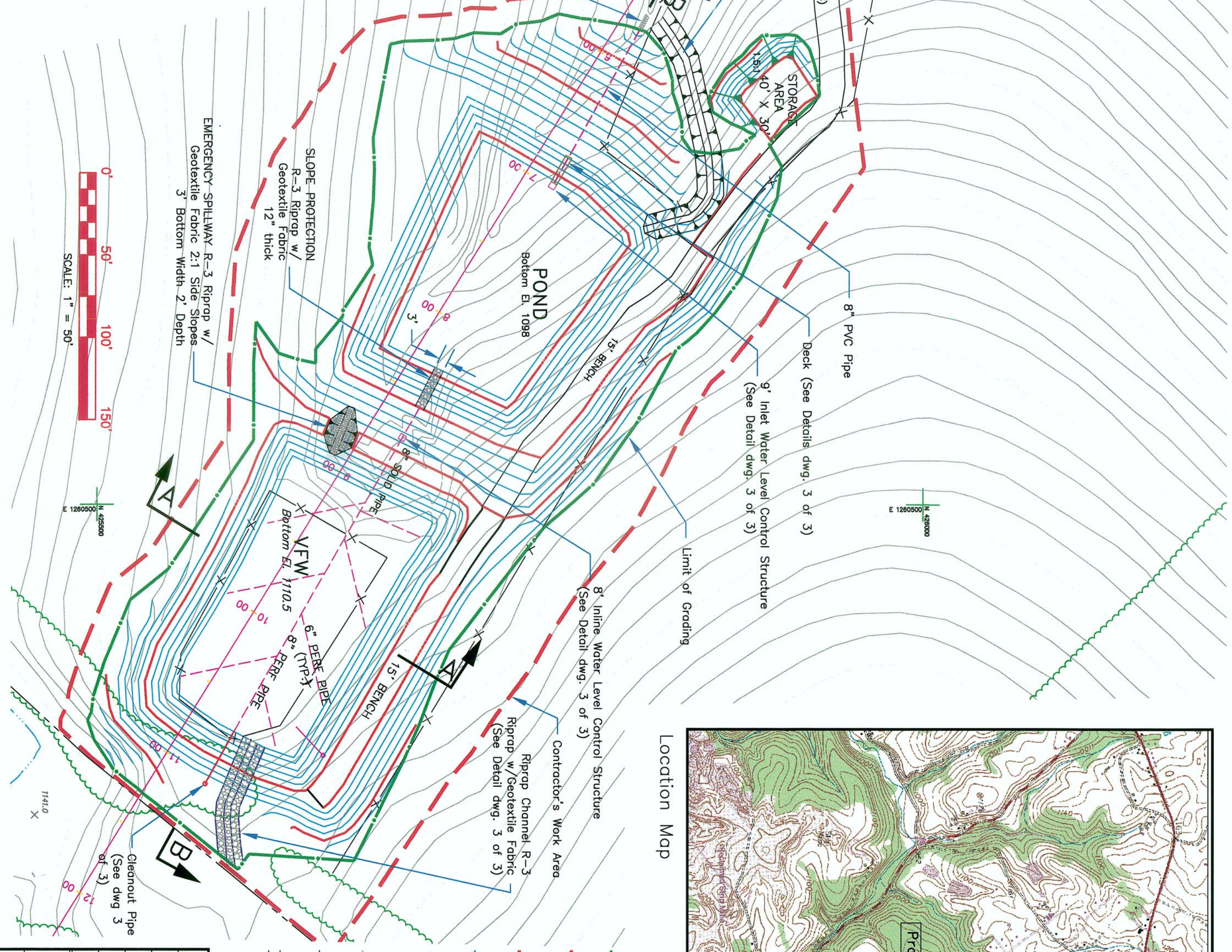
SECTION A-A

Scale: 1" = 20'



SECTION B-B

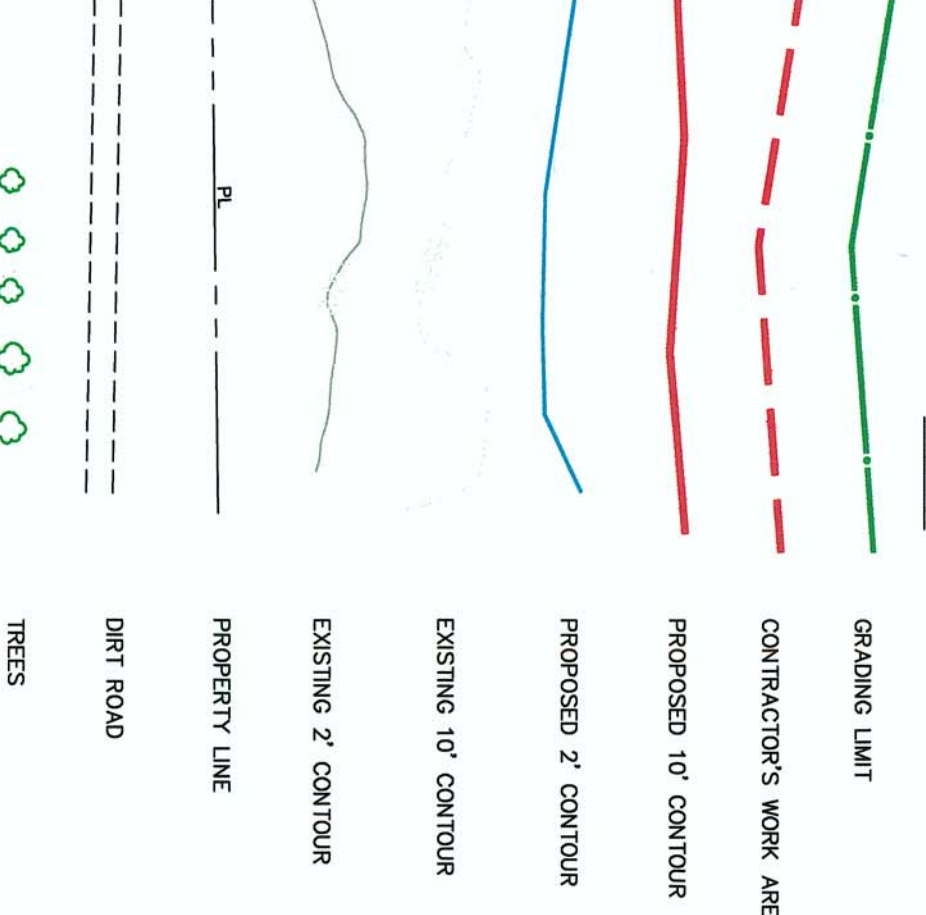
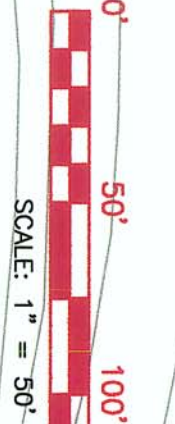
Scale: 1" = 20'



NOTES:

These drawings are in accordance with minimum standards of the Findlay Township Public Improvement Code.

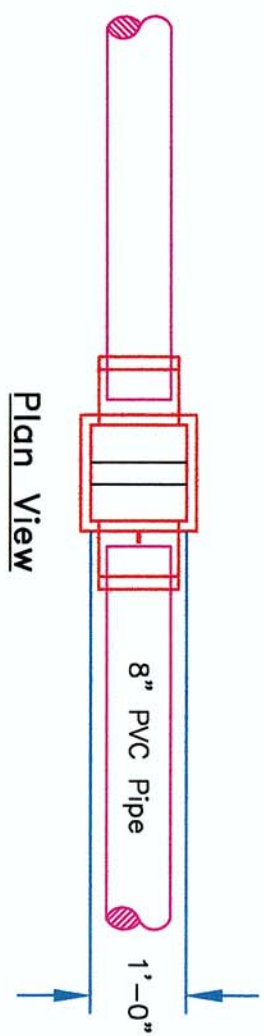
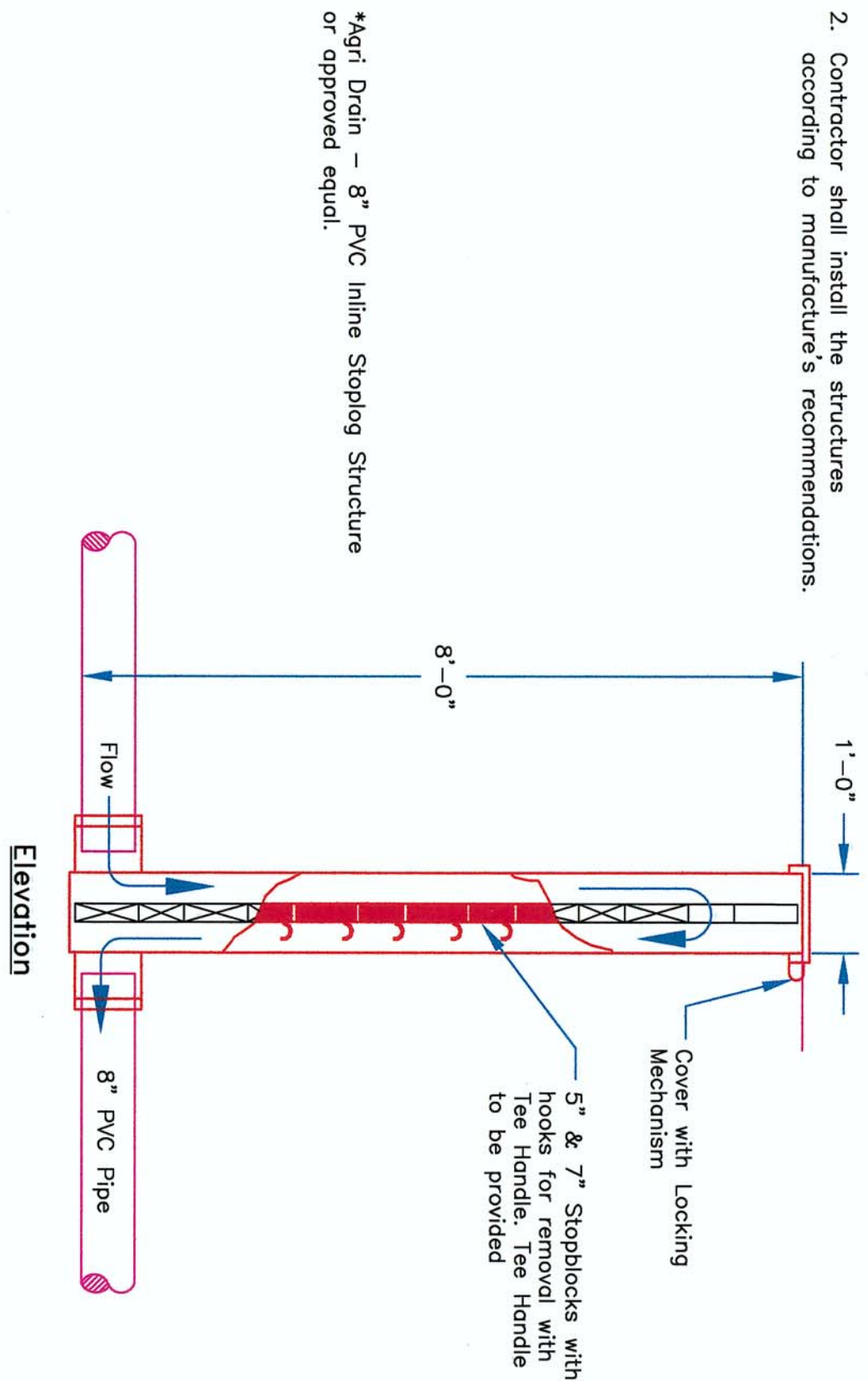
Excess cut shall be used to contour the storage area indicated. The storage area may be larger depending on the excess cut amount. Enlargement of the area shall be considered incidental to the Contract and no separate payment will be made.



NO.	DATE	REVISION	APPR.
1	10/02/2002		
DESIGNER: <i>[Signature]</i>			
RECOMMENDED BY: <i>[Signature]</i>			
DESIGN SECTION CHIEF - <i>[Signature]</i>			
APPROVED: <i>[Signature]</i>			
DISTRICT MANAGER - WASHINGTON COUNTY CONSERVATION DISTRICT			
COMMONWEALTH OF PENNSYLVANIA DEPARTMENT OF ENVIRONMENTAL PROTECTION			
CONTRACT NO. AMD 02(0642)101.1			
ACID MINE DRAINAGE ABATEMENT PROJECT HAMILTON DISCHARGE			
FINDLAY TWP. ALLEGHENY COUNTY			
PLAN & SECTIONS			
DRAWN BY: RCM/ADK		DATE: Oct. 02, 2002	DRAWING NO: 0642-02.DWG
CHECKED BY: RCM/ADK		SCALE: AS SHOWN	2 of 3



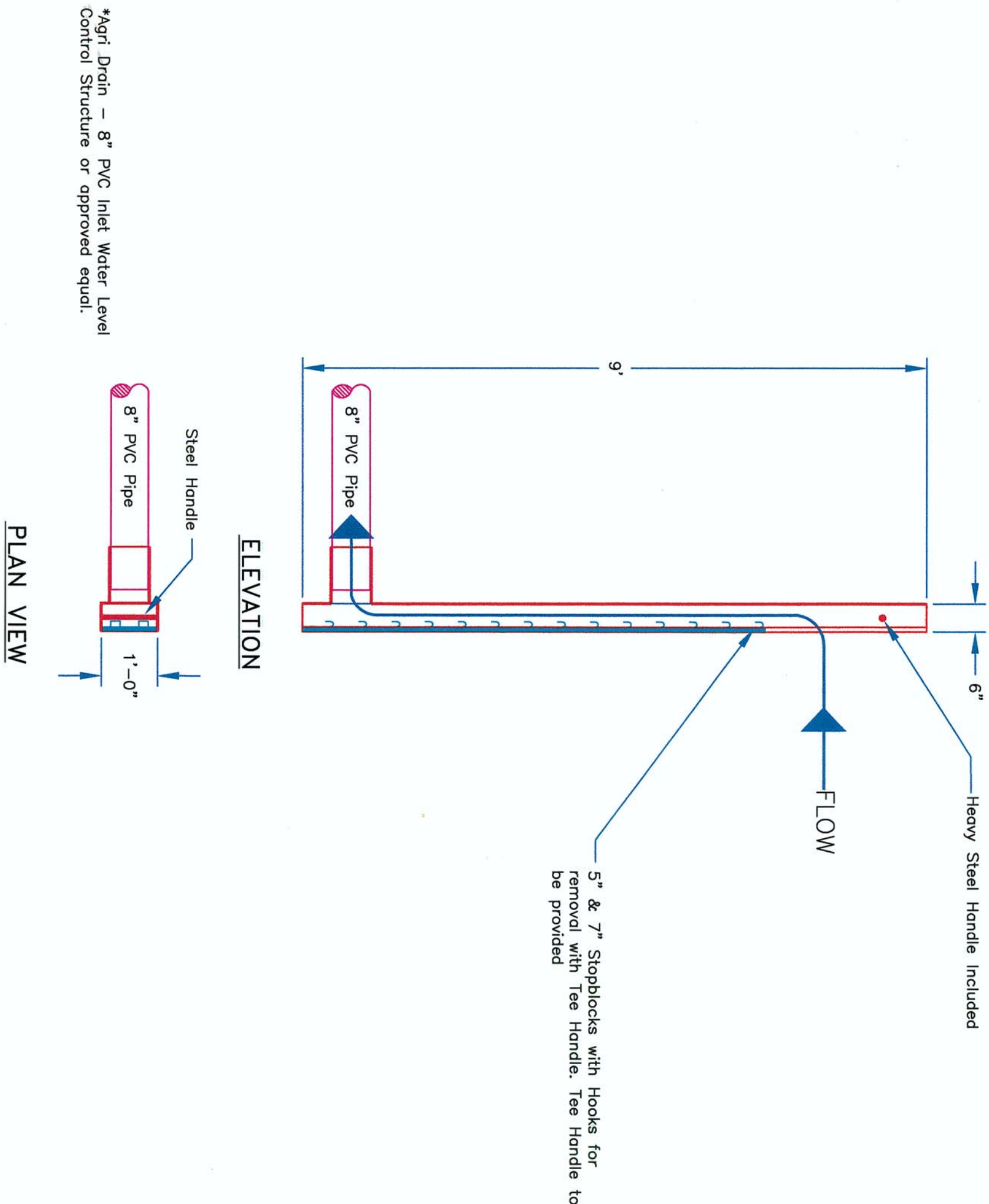
- Notes:**
1. Contractor shall exercise careful backfilling techniques during installation of the Inlet Control Structures.
  2. Contractor shall install the structures according to manufacturer's recommendations.



**Inlet Water Level Control Structure**

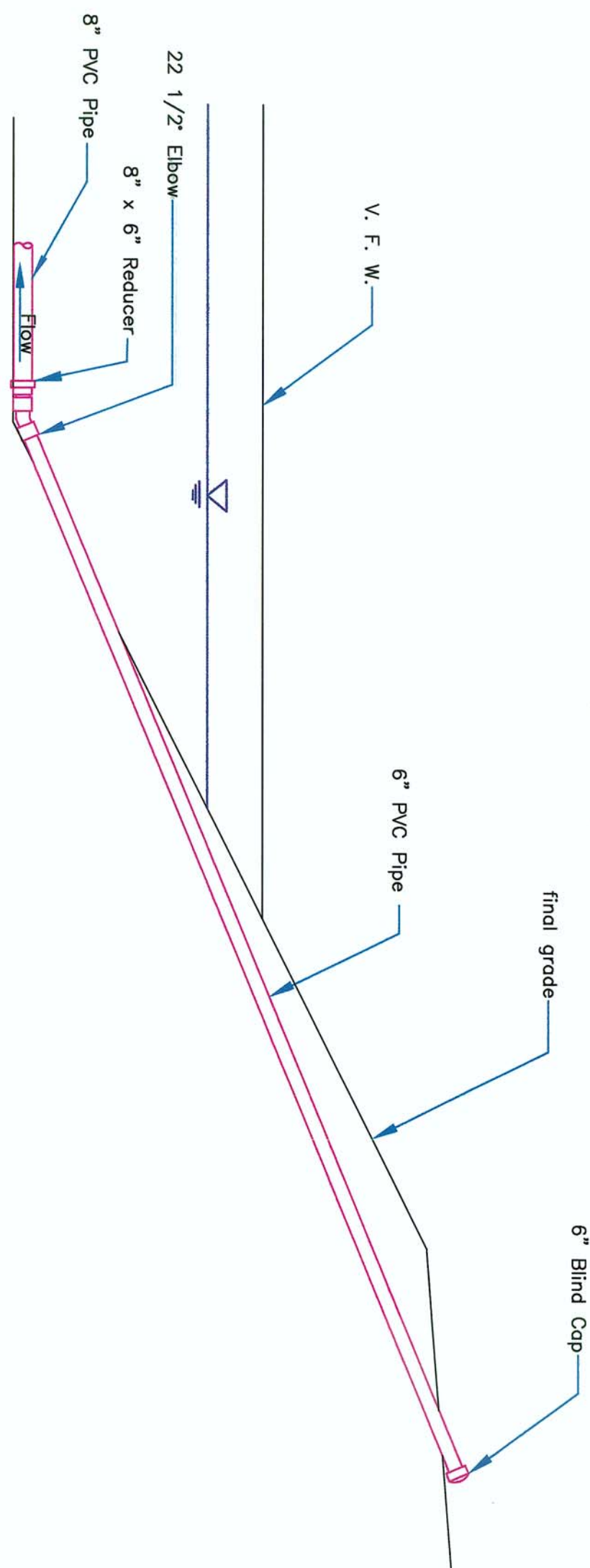
Scale: None

- NOTES:**
1. Contractor shall exercise careful backfilling techniques during the installation of the Inlet Level Control Structures.
  2. Contractor shall install the structures according to manufacturer's recommendations.



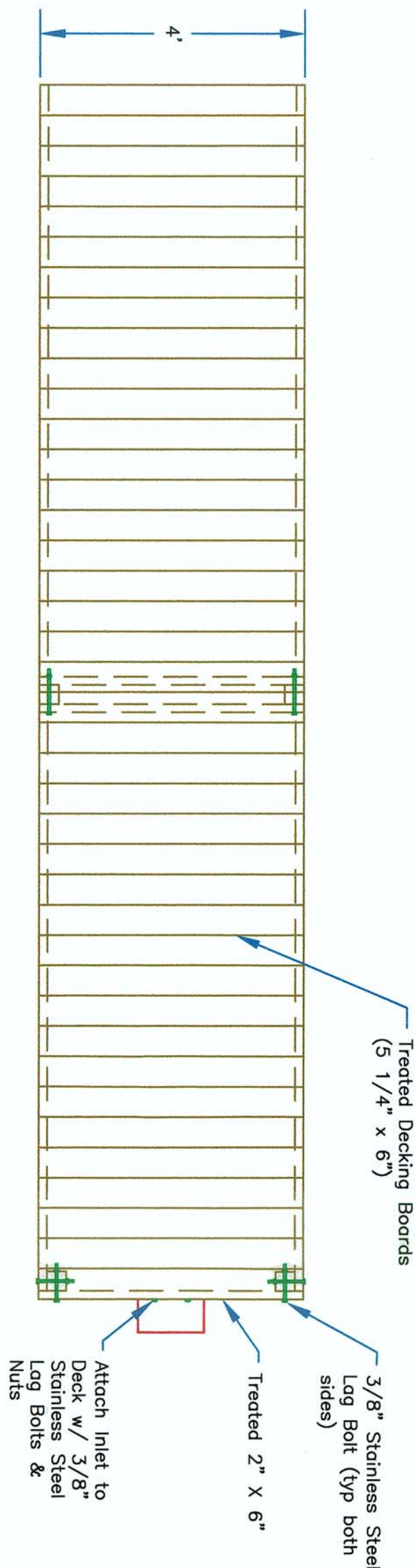
**\*INLET WATER LEVEL CONTROL STRUCTURE**

Scale: None

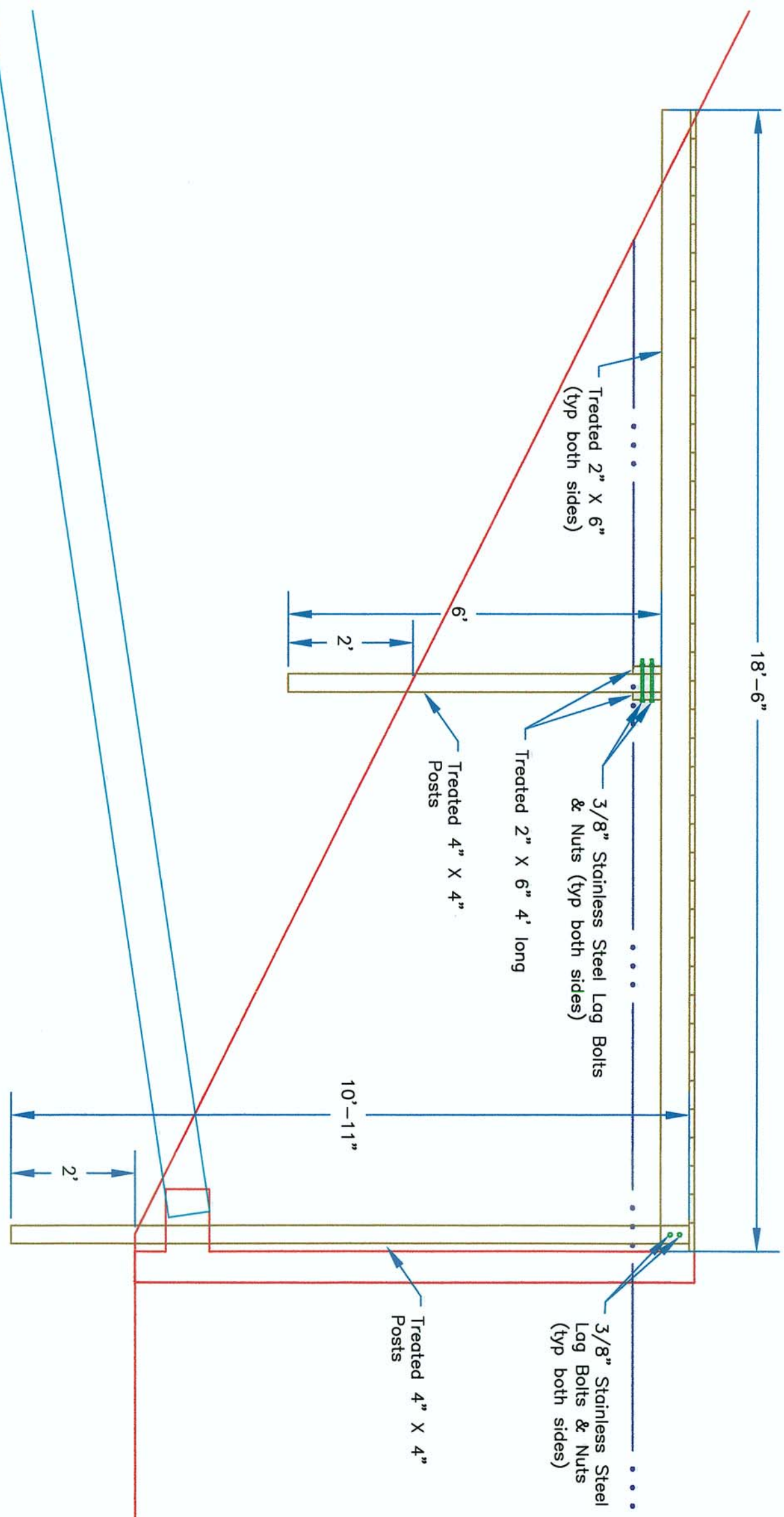


**Cleanout Pipe Detail (Typ.)**

Scale: 1" = 5'

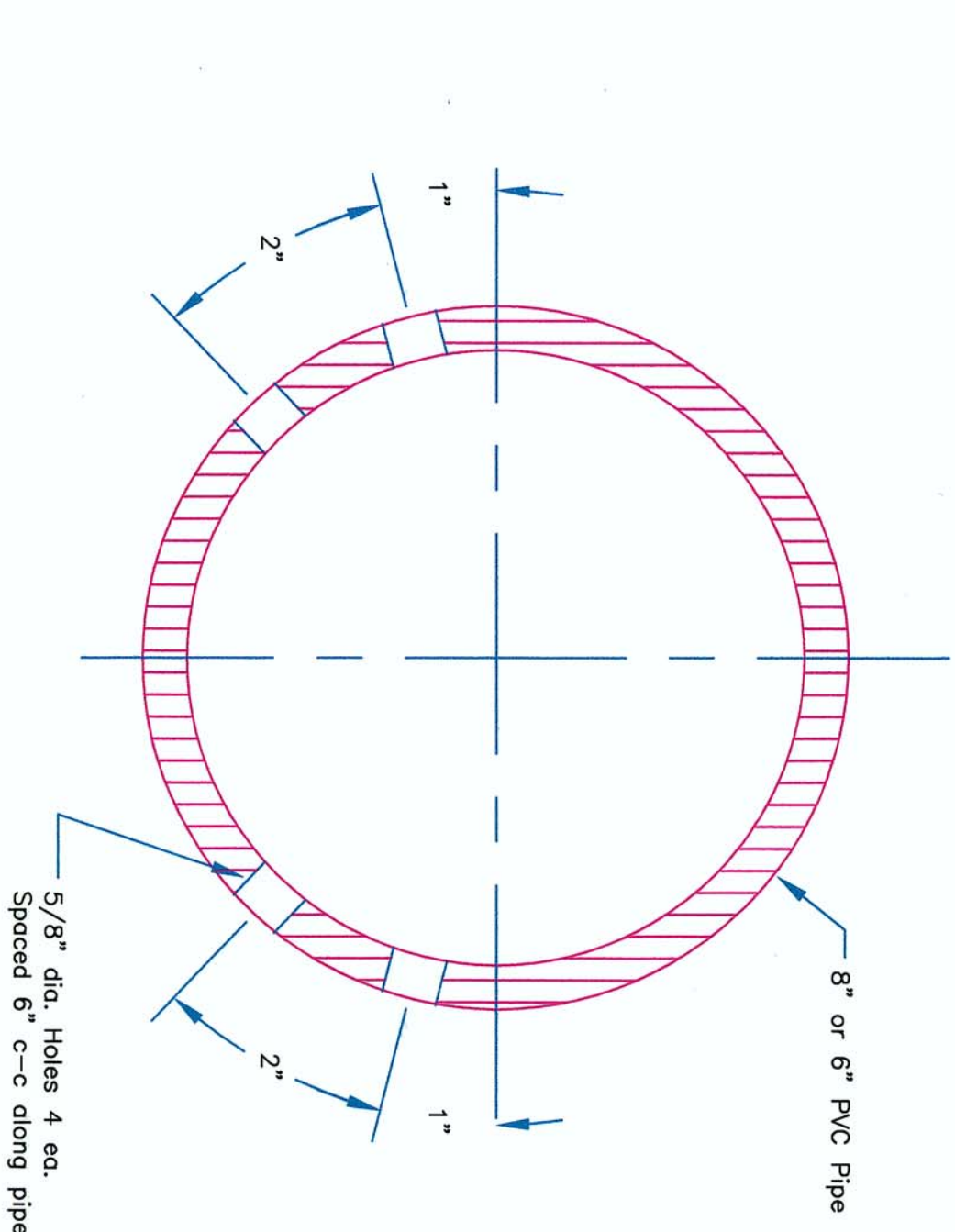


**TOP VIEW**



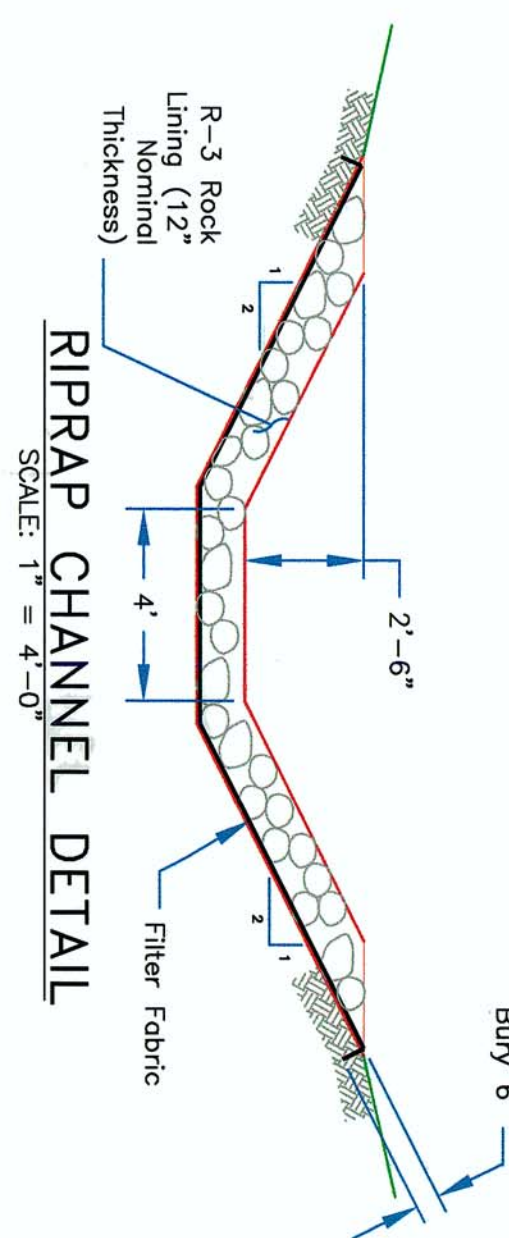
**DECK DETAIL**

Scale: 1" = 2'



**PIPE PERFORATION DETAIL**

Scale: 1/2" = 1"



**RIPRAP CHANNEL DETAIL**

SCALE: 1" = 4'-0"

NO.	DATE	REVISION	APPR.
1	10/02/02	1	
SUBMITTED BY: <i>[Signature]</i>			
DESIGN ENGINEER: <i>[Signature]</i>			
RECOMMENDED BY: <i>[Signature]</i>			
DESIGN SECTION CHIEF: <i>[Signature]</i>			
APPROVED: <i>[Signature]</i>			
DISTRICT NUMBER - WASHINGTON COUNTY CONSERVATION DISTRICT			
COMMONWEALTH OF PENNSYLVANIA DEPARTMENT OF ENVIRONMENTAL PROTECTION CONTRACT NO.AMD 02(0642)101.1			
ACID MINE DRAINAGE ABATEMENT PROJECT HAMILTON DISCHARGE			
FINDLAY TWP. ALLEGHENY COUNTY			
DETAILS			
DRAWN BY: RCV/JAK DATE: OCT 02, 2002 DRAWING NO: 0642-02.DWG SCALE: AS SHOWN 3 of 3			